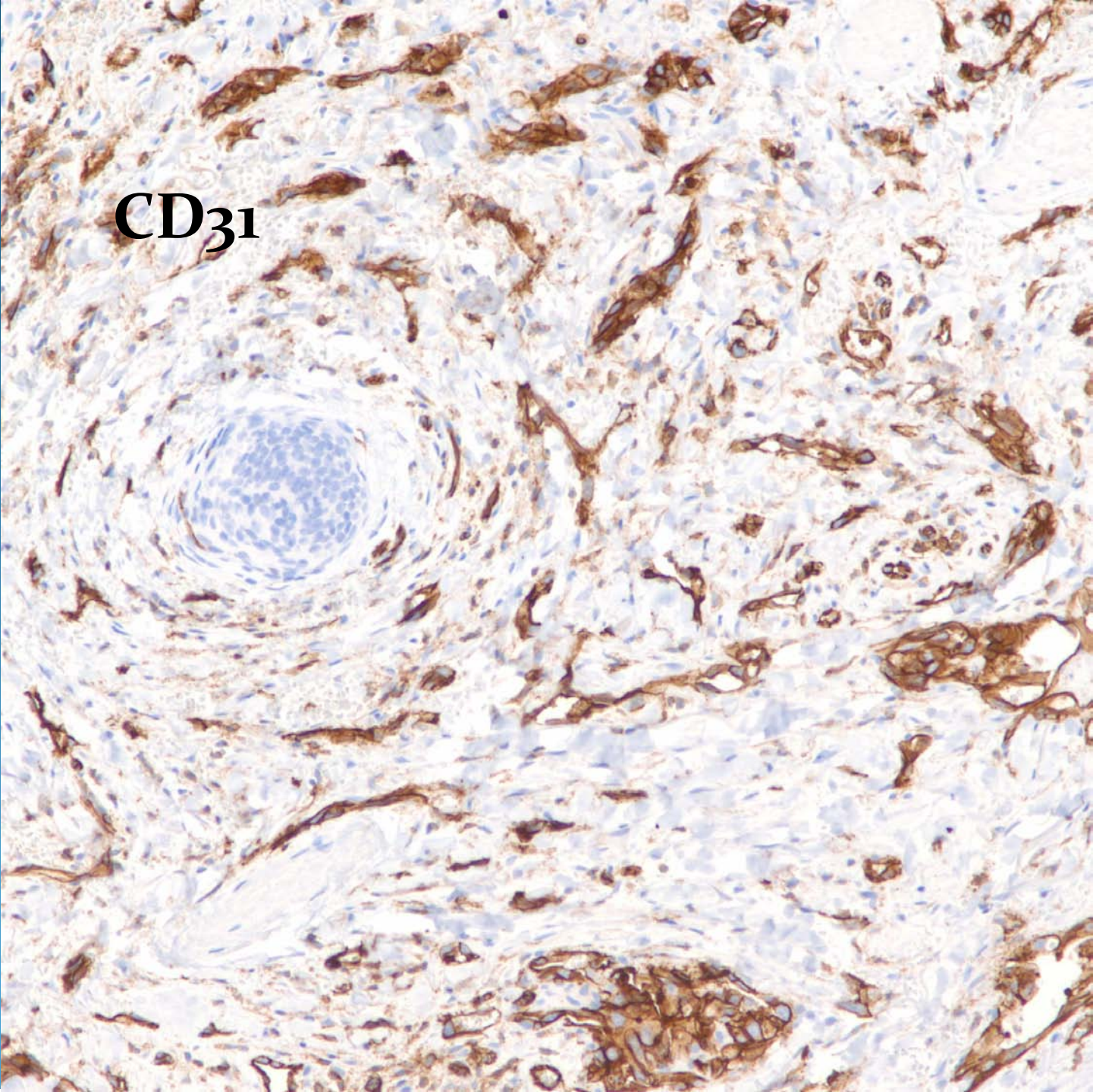
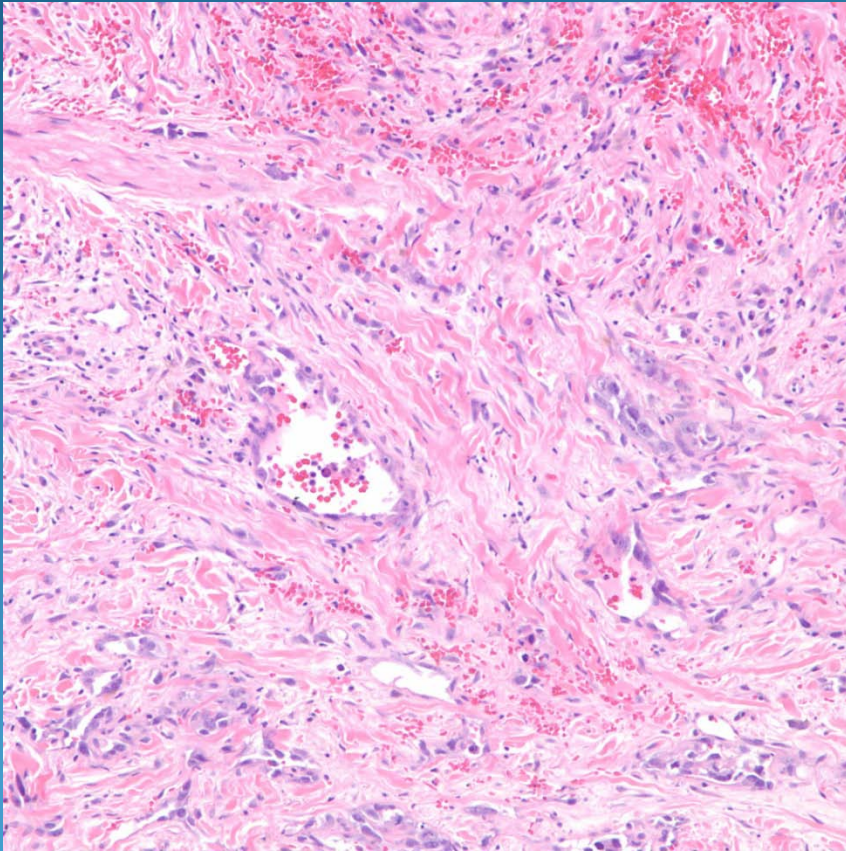


CD31



Angiosarcoma, Cutaneous

Pearls



- Diffusely infiltrating vascular spaces lined by hyperchromatic endothelial cells with considerable pleomorphism
- Occasionally solid nests with minimal luminal formation
- May need to confirm with CD31
- Rule out underlying soft tissue angiosarcoma with extension into skin